

Economical battery powered plastic strapping tool

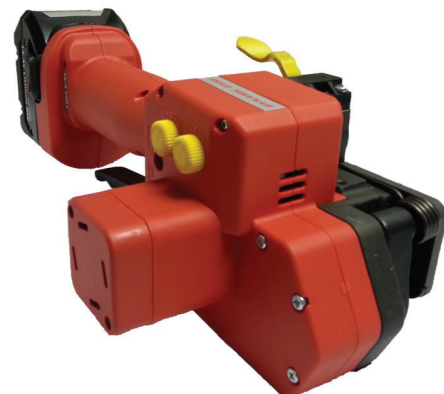


Characteristics

Strapping qualities:		Polypropylene (PP) and Polyester (PET)
Strapping dimensions:	widths	16.0 – 19.0 mm / 5/8 – 3/4"
	thicknesses	0.65 – 1.27 mm / .026 – .050"
Weight incl. battery:		4.3 kg / 9.5 lbs
Tool sizes with battery:		L346 x W166 x H139 mm / 13.6" x 6.5" x 5.5"
Average seal strength:		up to 75% (dependent on strap quality)
Type of seal:		Friction weld sealing
Strap tension:		650 – 3000 N / 146 – 675 lbs (adjustable)
Tensioning speed:		160 – 230 mm/s / 6.3 – 9 inch/s
Power supply:	Battery	14.4 VDC / 3.0 Ah Li-Ion
Suspension bracket (optional)		

Advantages

- Light and versatile strapping tool
- Robust and durable design
- Well proven strapping technology
- Simple one-handed operation
- Excellent cost – performance ratio
- Li-Ion battery technology
- Tension force and sealing time adjustable





Available Models

Item No.	Model	Strap widths		Strap thicknesses		Max. Tension		Tension speed	
		mm	inch	mm	inch	N	lbs	mm/s	inch/s
P3.3212	Prime 2100/16/0.65-1.05	16.0	5/8	0.65-1.05	.026-.041	3000	675	160-230	6.3-9
P3.3222	Prime 2100/19/0.65-1.05	19.0	3/4	0.65-1.05	.026-.041	3000	675	160-230	6.3-9
P3.3223	Prime 2100/19/1.06-1.27	19.0	3/4	1.06-1.27	.042-.050	3000	675	160-230	6.3-9

Battery charger

Item No.	Model	Charging type	Tension	Countries
N5.4460	Battery standard charger	Li-Ion	220-240 V / 50-60 Hz	A, B, BG, BIH, BOL, BR, CH, CL, CZ, D, DK, DZ, E, EAS, EST, ET, EY, F, FIN, GE, GR, H, HK, HR, I, IL, IND, IR, IRQ, IS, JOR, KSA, KWT, L, LAR, LT, LV, MA, MC, MK, MOC, N, NL, P, PK, PE, PL, PRC, PY, RA, RCH, RI, RL, RO, ROK, ROU, RP, RUS, S, SK, SLO, SYR, THA, TN, TR, UA, UAE, YU, YV, (BRN), (BRU), (CY), (EAK), (EAT), (GB), (IRL), (M), (MAL), (OM), (SGP), (Y), (Z), (ZA), (ZW)
N5.4462	Battery standard charger	Li-Ion	120 V / 50-60 Hz	BR, C, CDN, CO, CR, DOM, EC, GCA, J, JA, KSA, LB, MEX, NIC, PA, Puerto Rico, RC, RP, USA, YV
N5.4464	Battery standard charger	Li-Ion	220-240 V / 50-60 Hz	AUS, NZ

(..) = Adapter N52.2102 required

Battery

Item No.	Model	Tension	Power
N5.4345	Accu Li-Ion	14.4 VDC	3.0 Ah

Accessories

P32.0112	Standard suspension bracket
P32.0137	Suspension bracket for alternating positions
P32.0127	Wearing plate for rough surfaces
P32.1129	Turning button kit